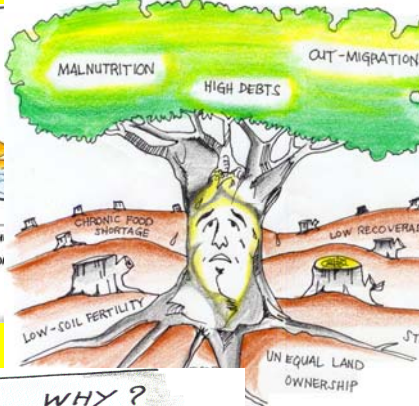
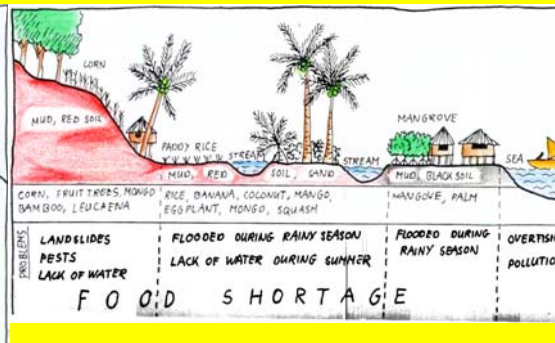
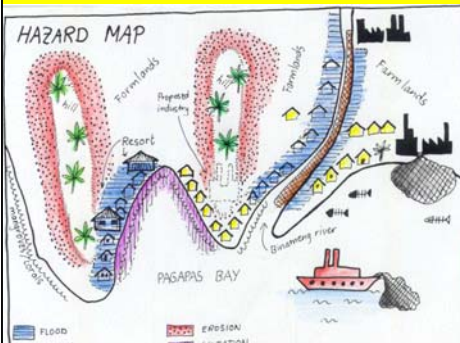


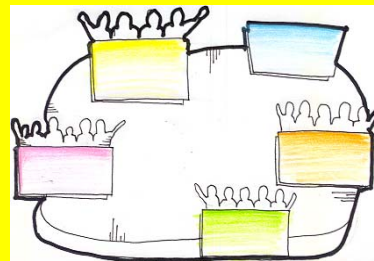
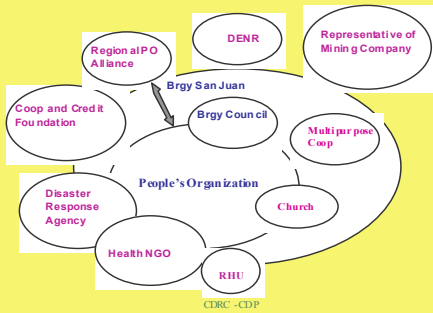
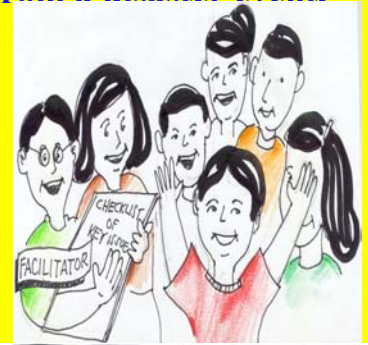
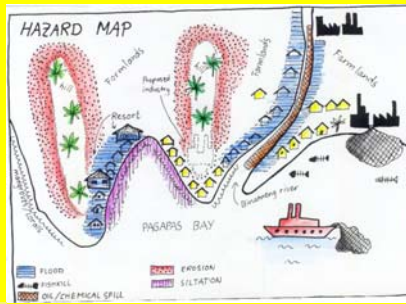


for Dis

Vulnerability - a set of conditions and processes resulting from physical, social, economical and environmental factors, which increase the susceptibility of a community to the impact of hazards



Capacity – the strengths and resources which are present in individuals, households, the community and society which enable them to cope with, withstand, prepare for, prevent, mitigate, or recover from a disaster event.



	J	F	M	A	M	J	J	A	S	O	N	D
FLOODS												
DROUGHT												
EATING ONE MEAL/DAY												
CHARCOAL MAKING												
WAGE LABOR												
BAMBOO PRODUCTS												
BUSSYEST SEASON												
HEAVILY INDEBTED												

Center for Disaster Preparedness (CDP)



Occurs or happens when a hazard impacts on or strikes a vulnerable community with low capacity resulting in damages, loss and serious disruption of village/community functioning.

The widespread human, material and environmental losses exceed the village/community's ability to cope using its own resources.

Center for Disaster Preparedness (CDP)

Community-Based Disaster Management Approach

Activities, projects and programs to reduce disaster risks are primarily designed by people living in high risk localities, and are based on their urgent felt needs and capacities,



Center for Disaster Preparedness (CDP)

PRINCIPLES OF CBDM:

- Participatory process and content
- Responsive
- Integrated
- Proactive
- Comprehensive
- Multi-sectoral and multi-disciplinary
- Empowering
- Developmental
- >> sustainability &
- >> replication follow



Center for Disaster Preparedness (CDP)

Why the Community Based DM Approach?

- Shift from emergency management to disaster risk management
- People in the community suffer most the damaging effects; They face and respond even before outside help come
- Increasing trend in disaster occurrence and loss from small and medium-scale disasters
- Correct defects of the top-down approach



Center for Disaster Preparedness (CDP)

Community Based Disaster Risk Management Process



Center for Disaster Preparedness (CDP)

Disaster Preparedness Training



Center for Disaster Preparedness (CDP)

Hazard, Vulnerability, Capacity Assessment

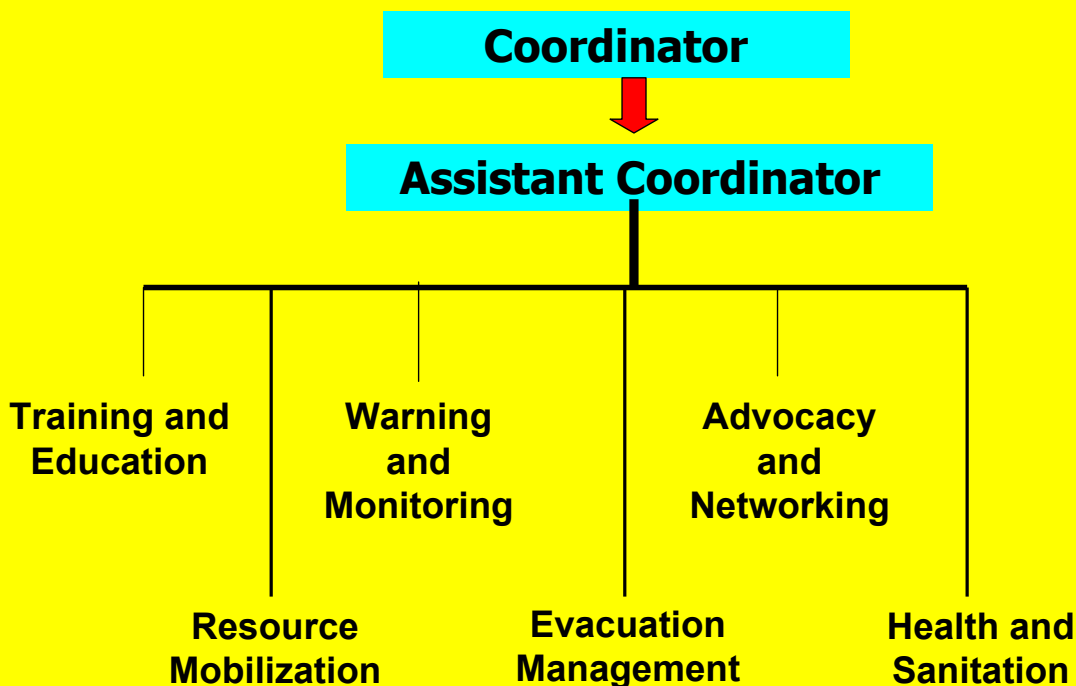


Community Public Awareness & Warning System



Center for Disaster Preparedness (CDP)

Organizing Community Disaster Management Organization



Community Disaster Management Plan

During

Emergency

After a Disaster

✓ Preparedness

✓ Emergency
Response

✓ Recovery

✓ Mitigation

✓ Rehabilitation

Development

↑ Capacities ↓ Vulnerabilities

Center for Disaster Preparedness (CDP)

Community Drill

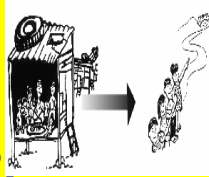


Center for Disaster Preparedness (CDP)

Drawing Inspiration from Initial Results → →

“When disasters occur it is our community that is affected first. We realize it is important to be prepared because there will be a gap between the disaster and the time external assistance arrives.”

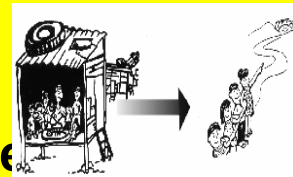
- Mr. Bikash R. Dhakhwa of Ward 34, KVERMP, Nepal



“As we completed our project, our community became closer. This is something I have not seen in a long time.” - Mr. Peng Eourn, a villager in the CBFMP, Cambodia

Center for Disaster Preparedness (CDP)

“Community involvement and transparency are key in any initiative.”- Mr. Raja Ram Suwal, school principal in the School Earthquake Safety Program in KVERMP, Nepal



“ The greatest achievement of all is that the community has been able to realize Pro-activeness has more results than Reaction and Welfare – Mr. Gemunu Sumathipala, Ex-chairman of Nawalapitiya Urban Council

Center for Disaster Preparedness (CDP)

Maraming Salamat Po!



Center for Disaster Preparedness (CDP)